

# CHARMILL

RESIDENTIAL



Lyndhurst Lodge, Hampstead NW3

£1,500



# Lyndhurst Lodge



## Description

A refurbished three double bedroom apartment located on Lyndhurst Road in Hampstead. This property has been refurbished to the highest of standards and comprises a spacious open plan kitchen/reception room leading onto a private terrace, principal bedroom with en-suite bathroom and built in storage, second double bedroom with en-suite shower room, third bedroom and a family shower room. Further benefits include a stunning communal garden.

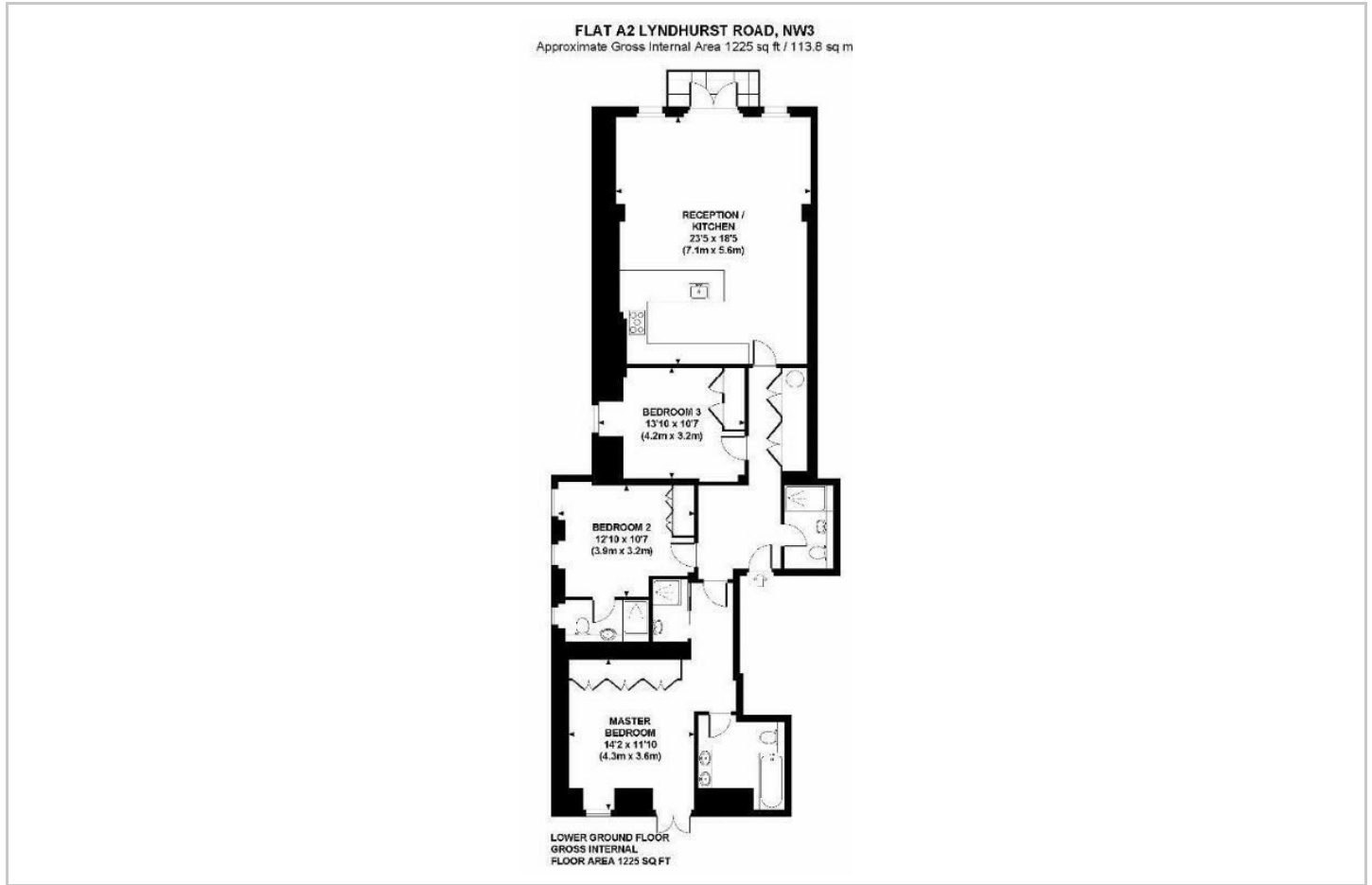
- Three bedrooms
- Recently refurbished
- Balcony
- Three bathrooms
- Furnished/Unfurnished
- Communal Gardens



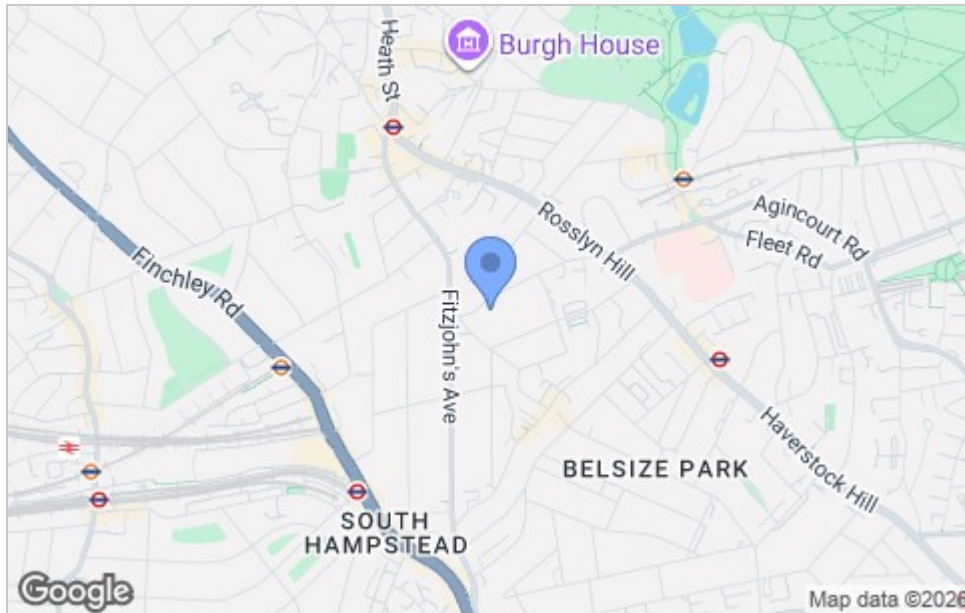
Lyndhurst Road, London, NW3 5PB



# Floor Plan



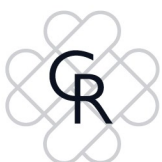
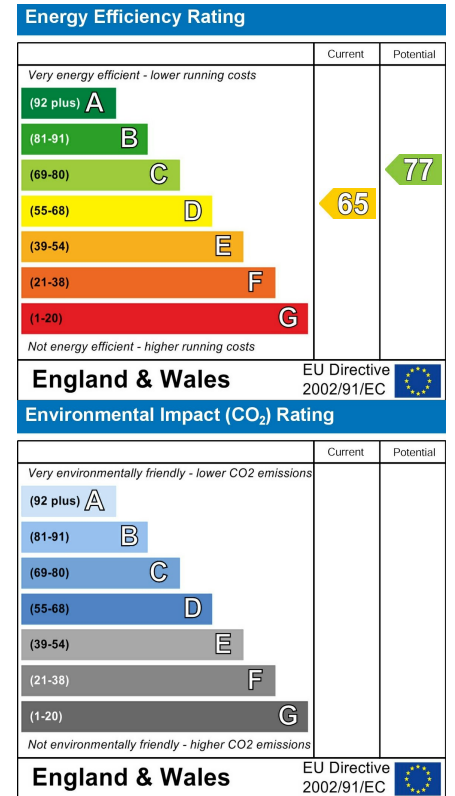
# Area Map



# Viewing

Please contact us on 020 7046 6275 if you wish to arrange a viewing appointment for this property or require further information.

# Energy Efficiency Graph



These particulars, whilst believed to be accurate are set out as a general outline only for guidance and do not constitute any part of an offer or contract. Intending purchasers should not rely on them as statements of representation of fact, but must satisfy themselves by inspection or otherwise as to their accuracy. No person in this firm's employment has the authority to make or give any representation or warranty in respect of the property.

020 7046 6275 • sales@chamillresidential.co.uk • 51 Maida Vale, Little Venice, London W9 1SD  
chamillresidential.co.uk